



Low Noise Tunable Laser

Clean Light portfolio – Feature Guide

The **Pure Photonics** full-band tunable laser solution provides a very narrow linewidth (~10 kHz), significantly reduced low-frequency AM and FM noise and a range of operating modes in this low-noise setting. The product can access any desired frequency set-point in the tuning range (C-band, L-band or optionally up to 60nm). Output power can be set as low as 7dBm and as high as 18dBm.

This feature guide provides more detail about the features available on this product and how to use them, including interactions with the Graphical User Interface, Command Line Interface and the base RS-232 interface.

We recommend using this guide as a starting point, with the need to use our more detailed implementation guides and application notes (mostly available on our website) for a full understanding.



1. Table of Contents

1. Table of Contents	2
2. Features by Module Family	3
3. How to Use this guide	5
4. Configuring (micro) USB interfaces	6
5. Electrical pin-out	7
6. Low-noise modes.....	8
7. In-operation Frequency and Power Adjust.....	9
8. Clean Sweep (standard)	10
9. Clean Sweep Extended	11
10. Clean Jump	12
11. Clean Scan	13
12. No Drift Calibration	14
13. Clean Modulation FM.....	15
14. Clean Modulation AM	16
15. Clean Measurement (CH1 and CH2).....	17
16. Low RIN Configuration.....	18
17. PPCL5x0 Enclosure.....	20

2. Features by Module Family

The features available on each model is listed in the below table. The ‘S’ designates a standard feature (available on all units) and the ‘O’ designates an optional feature.

	PPCL600	PPCL700
Tuning range ¹	S 38nm O 60nm	S 38nm O 60nm
Maximum Power ¹	S 13.5dBm O 17dBm (C-band) O 16dBm (L-band)	S 13.5dBm O 17dBm (C-band) O 16dBm (L-band) *
In-operation power adjust	S (7dBm-MAX)	S (7dBm-MAX)
In-operation frequency adjust	S (+-12 GHz)	S (+-30GHz)
Fiber	PMF /w short or long tubing	PMF /w short or long tubing
Clean Sweep		50GHz
Clean Jump		S
Clean Scan		
No Drift	O	O
Clean Sweep Extended		
Low RIN configuration		Standard if no AM 1MHz
Clean Modulation FM		O
Clean Modulation AM		O (1MHz BW or 50kHz with low RIN)
Clean Measurement CH1		O ³
Clean Measurement CH2		O ³
Analog Output		O ³
Enclosure ²	PPCL500	PPCL550
Enclosure fiber	Adapter or pigtail (900um/2mm/3mm)	Adapter or pigtail (900um/2mm/3mm)

Note 1: the customer can choose their desired tuning range (up to 60nm) in the wavelength ranges 1515nm – 1580nm (extended C-band) and 1560nm – 1625nm (extended L-band). Maximum guaranteed power in the tuning range (subject to the selected power level) is as below:

Max Guaranteed Output Power	1515-1520	1520-1525	1525-1570	1570-1575	1575-1580
Extended C-band	15dBm	16 dBm	17 dBm	16 dBm	15 dBm
	1560-1565	1565-1570	1570-1615	1615-1620	1620-1625
Extended L-band	14 dBm	15 dBm	16 dBm	15 dBm	14 dBm

E.g when a customer selects 17dBm for 1515-1575nm range, they are guaranteed at least 15dBm at 1515nm. Power levels above that are best-effort.

Note 2: The enclosure solution integrates the PPCL600/PPCL700 into a metal enclosure with power supplies and a convenient communications interface. The customer will need to plug in a barrel plug from a power supply (included) and a micro-USB cable (included). If analog inputs are included, SMA connectors are added (PPCL550 only). The customer can choose between a fiber adapter in the wall of the module or a fiber pigtail (900um buffer, 2mm cable or 3mm cable).

Note 3: Exact functionality depends on firmware implementation. Customization available.



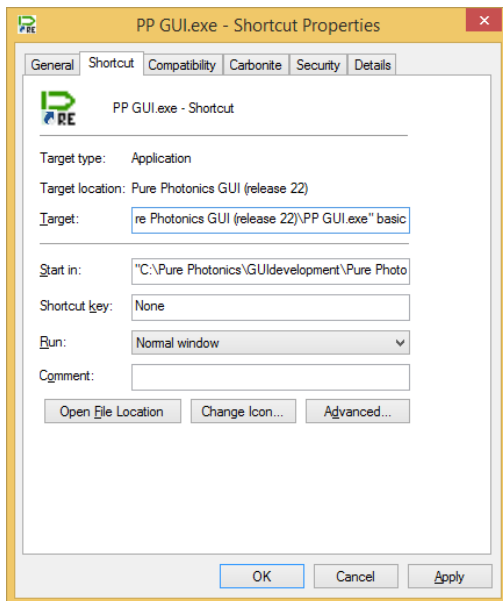
At times, special configurations may have been created for customers that deviate from the above descriptions. Customers that have purchased such units were made aware of the differences.

3. How to Use this guide

This guide provides a description for each feature, along with how to use it and its limitations. Then more details are provided on which Graphical User Interface (GUI) to use with this feature, what calibration files are required and how to communicate through the Command Line Interface (CLI) and standard RS-232. For the use of the CLI and RS-232, please refer to the Pure Photonics Tunable Laser operating guide.

The Graphical User Interface is a set of tools to demonstrate and control the different features. It uses interfaces that are completely accessible to the customer and hence any feature in the GUI can be fully implemented by the customer in their own system.

The core file in the GUI is the “PP GUI.exe” file. Some of the features are loaded as their own executable (for convenience), but any other feature can be accessed also by creating a shortcut to the “PP GUI.exe” file and then adding the appropriate keyword. Please see below image as an example for the basic GUI.



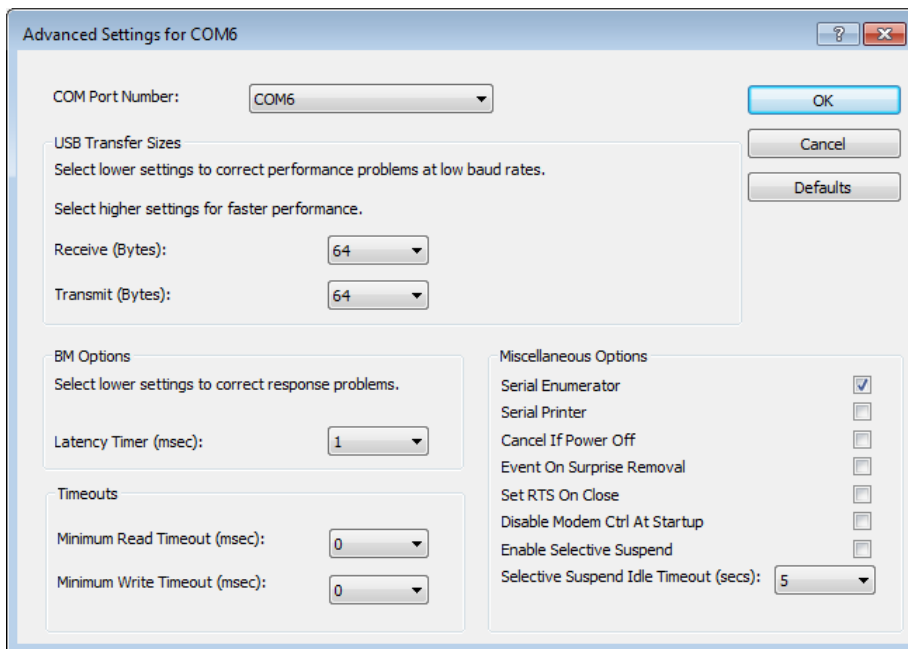
4. Configuring (micro) USB interfaces

The native communication with the module is through a low-voltage RS-232 interface. Several options exist where the customer-facing interface has been changed to a USB interface. For example, the PPCL500 comes with a micro-USB interface option, the CoBrite package comes with a standard USB interface and for computers without a COM port an RS-232 – USB dongle is used.

The standard USB interface is not optimized for serial communications on the RS-232 interface. Due to differences in protocol and optimization algorithms for the USB port, it installs with non-optimal settings. For most operations, this is not a problem, however for a firmware upgrade a proper configuration is required.

We recommend to make the below changes when the USB interface gets registered. On every computer this is only needed once for each USB interface/device.

- a. Open the 'Windows Control Manager'
- b. Open 'Hardware and Sound'
- c. Open 'Device Manager'
- d. Find the COM ports
- e. Right-click the USB serial port and select 'Properties'
- f. Select the tab 'Port Settings' and click the 'Advanced' button
- g. **Set the latency timer value to 1msec.**
 - a. You can also select the COM-port designation here (we recommend port # <10).
 - b. We recommend to set the 'USB transfer sizes' to the lowest possible setting (do this for both receive and transmit)
- h. Close the windows and start using the device



5. Electrical pin-out

The PPCL600 comes configured with a 14-pin male connector (AIC DHAM-2-14-846-GH-M); the PPCL700 comes with a 20-pin male connector (PPCL300; Samtec FTMH-110-02-L-DV-ES). The first 14 pins of the 20-pin connector match the 14 pins on the 14-pin connector, defined by the OIF MSA document:

The 14-pin and 20-pin connector are defined as follows:

+3.3V supply	1		2	DIS*	
	3		4	SRQ*	
GND	5		6	MS*	
	7		8	TxD (1)	
-5.2V supply	9		10	RxD (1)	
	11		12	RST*	
Not used	13		14	DitherAA	
PZT Noise Reduction	15		16	AM Modulation	
Analog output	17		18	Clean Measurement 1	
Clean Measurement 2	19		20	FM Modulation	
(1) not used when unit has micro-USB connector					

Looking onto the top of the micro ITLA, with the goldbox on the right-side, the fiber going to the left and the connector closest to you. The pin 1 is the closest pin to the center of the ITLA. The top row increments as 1, 3, 5, etc. The bottom row (along the edge of the PCB) counts pins 2, 4, 6, etc.

6. Low-noise modes

Description

The standard operating mode for the laser is the dither-mode. In this mode all the control loops are running and creating noise (especially in the 1-10,000Hz range). By disabling these control-loops, either completely or partially, a lower noise behavior can be achieved.

In the whisper mode, essentially all control loops are disabled, to the extent possible. This results in the removal of the 200Hz tone (and its overtones) and this significantly reduced the AM and FM noise in the below 10,000Hz range. If in any way possible, we recommend to once in a while switch back to the dither mode for the laser to relock. Such a switch-back could be done in less than 10 seconds.

GUI

Basic GUI (keyword: 'basic')

CLI Commands

it.cleanMode(x) to adjust the low-noise mode, with 0 the standard dither-mode and 2 the whisper-mode (a value of 1 defaults to 2).

RS-232 Commands

Register **0x90**: switch between the different low-noise modes, with 0 the standard dither-mode, 2 the whisper-mode (a value of 1 defaults to 2).

7. In-operation Frequency and Power Adjust

Description	<p>After reaching the target power and frequency, the user can adjust the power and frequency, while maintaining lasing operation in the same optical mode for a certain operating range. Beyond this range the laser would need to shut down and restart at the new set-point.</p> <p>In whispermode the frequency can be adjusted (though we recommend small steps). The Power cannot be adjusted.</p>
GUI	Basic GUI (keyword: 'basic')
CLI Commands	<p><i>it.pwr(x)</i> to adjust the power setting, with x the target power in units of 0.01dBm</p> <p><i>it.ftf(x)</i> to adjust the frequency setting, with x the offset from the target frequency (FCF + GRID * (CHANNEL-1)) in units of 1MHz</p>
RS-232 Commands	<p>Register 0x31: adjust power in units of 0.01dBm</p> <p>Register 0x62: adjust frequency in units of MHz</p>

8. Clean Sweep (standard)

Description	Performs a controlled frequency ramp (up and down) over a chosen frequency range. The laser will initially ramp to (+0.5 * range) and then reverse the ramp down to (-0.5 * range). This ramp-up and ramp-down is repeated until the user instructs to stop.
GUI	Clean Sweep GUI (keyword: 'cleansweep')
CLI Commands	<p><i>it.cleanSweepAmplitude(x)</i> to set the Clean Sweep range, with x the range in units of GHz</p> <p><i>it.cleanSweepEnable(x)</i> to activate (x=1) and de-activate (x=0) the Clean Sweep</p> <p><i>it.cleanSweepOffset()</i> to read the frequency offset in units of 0.1 GHz (signed integer).</p> <p><i>it.cleanSweepRate()</i> to set the maximum sweep rate in MHz/sec</p>
RS-232 Commands	<p>Register 0xe4: set the Clean Sweep range in units of GHz</p> <p>Register 0xe5: activate (1) and de-activate (0) the Clean Sweep</p> <p>Register 0xe6: read the frequency offset in units of 0.1 GHz (signed integer).</p> <p>Register 0xe7: Set the maximum sweep rate in units of MHz/sec</p> <p>Register 0xe8: Set the behavior of the trigger indicators</p> <p>Register 0xf1: mapped to register 0xe7</p>

9. Clean Sweep Extended

Description	Similar to the standard Clean Sweep, this feature provides a controlled frequency ramp up and down. The extended sweep is used for sweep ranges larger than 100GHz, where additional calibrated values are required for proper operation.
GUI	Clean Sweep Extended GUI (keyword: 'CleanSweepExtended')
CLI Commands	<p><i>it.cleanSweepAmplitude(x)</i> to set the Clean Sweep range, with x the range in units of GHz</p> <p><i>it.cleanSweepEnable(x)</i> to activate (x=1) and de-activate (x=0) the Clean Sweep</p> <p><i>it.cleanSweepOffset()</i> to read the frequency offset in 0.1 GHz with an offset of 200GHz (offset = (value – 2000) * 0.1 GHz)</p> <p><i>it.cleanSweepRate()</i> to read the frequency offset in units of 0.1 GHz (signed integer).</p>
RS-232 Commands	<p>Register 0xe4: set the Clean Sweep range in units of GHz</p> <p>Register 0xe5: activate (1) and de-activate (0) the Clean Sweep</p> <p>Register 0xe6: read the frequency offset in units of 0.1 GHz (signed integer).</p> <p>Register 0xe7: Set the maximum sweep rate in units of MHz/sec</p> <p>Register 0xe8: Set the behavior of the trigger indicators</p> <p>Register 0xf1: mapped to register 0xe7</p> <p>Please refer to the implementation guide for Extended Clean Sweep.</p>

10. Clean Jump

Description

Provides the ability to quickly jump from one frequency to another. Typically, with this laser type, to switch from one frequency to another will require disabling the laser and re-enabling it, resulting in 20-30 seconds switching time. With this feature an in-operation switch is performed (includes a modehop) which takes place is less than a second (0.1 seconds for specific frequency combinations).

GUI

The Cleanjump implementation for PPCL700 (different from PPCL300) is not implemented in the GUI.

CLI Commands

Not implemented in CLI.

RS-232 Commands

Register **0xd0**: to set the target channel and to start the Clean Jump

Register **0xd1**: to read the frequency error (in 0.1GHz)

Register **0xd2**: To initiate the calibration

Please refer to the [CleanJump Implementation Guide](#) for further information (specific for PPCL700).

11. Clean Scan

Description

Performs a scan over a wider frequency range. The full range is broken up in individual sweeps with Clean Jumps in-between to provide coverage over the full frequency range.

For reasons of speed and accuracy, we recommend a range of 100 GHz for each segment. Note that in the GUI, the segment size is multiplied by 1.2x to have 10% overlap on both extremes.

The intended operation is to have a new center point provided to the laser after each sweep. If no new center point is available, the laser will continue with the next sweep around the same center-point (i.e. same as Clean Sweep).

GUI

Clean Scan GUI (keyword: 'cleanscan')

CLI Commands

it.cleanScanAmplitude(x) to set the Clean Scan range, with x the range in units of GHz

it.cleanScanEnable(x) to activate (x=1) and de-activate (x=0) the Clean Sweep

it.cleanScanOffset() to read the frequency offset in 0.1 GHz (signed integer)

RS-232 Commands

Register **0xe4**: set the Clean Scan range in units of GHz

Register **0xe5**: activate (1) and de-activate (0) the Clean Scan. The read operation provides status information (bit 0 is set to 1 if the next setpoint has been loaded; bit 1 is set to 1 if the Clean Scan is ongoing; bit 3 and 2 are 01 if the sweep is going to higher frequency and 10 if the sweep is going to lower frequency).

Register **0xe6**: read the frequency offset in 0.1 GHz (signed integer)

Please refer to the [CleanScan Implementation Guide](#) for further information.

12. No Drift Calibration

Description

The standard unit will show a frequency variation with ambient temperature that varies from unit to unit and can be as large as 500MHz over the temperature range.

The No-drift calibration will test each individual laser over temperature and find its optimized correction constants. These constants are loaded to the permanent memory of the unit and accessed directly by the firmware.

No user intervention is needed for this feature. If the calibration occurred, the firmware applies it.

GUI

Basic GUI (keyword: 'basic')

CLI Commands

None

RS-232 Commands

None

13. Clean Modulation FM

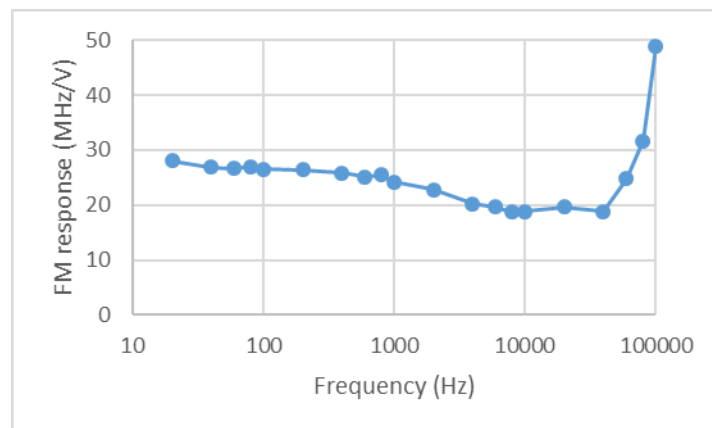
Description

Provides access to the PZT to generate frequency modulation without any associated amplitude modulation. This is a hardware modification.

Excessive high or low (negative) voltage values and frequencies close to 888Hz should be avoided while the laser is operating in standard (dither) mode.

The signal is DC coupled and the typical bandwidth is 100kHz. The response varies with frequency (reproduced below as example), but should not exceed 100MHz. The applied voltage should be between 0 and 6V (signal clipping occurs beyond these voltages).

Note, FM should only be used in the whispermode. To allow the frequency modulation, bit 2 in register 0x90 (0x04) needs to be set.



GUI

Basic GUI (keyword: 'basic')

CLI Commands

Not applicable

RS-232 Commands

Not applicable

14. Clean Modulation AM

Description

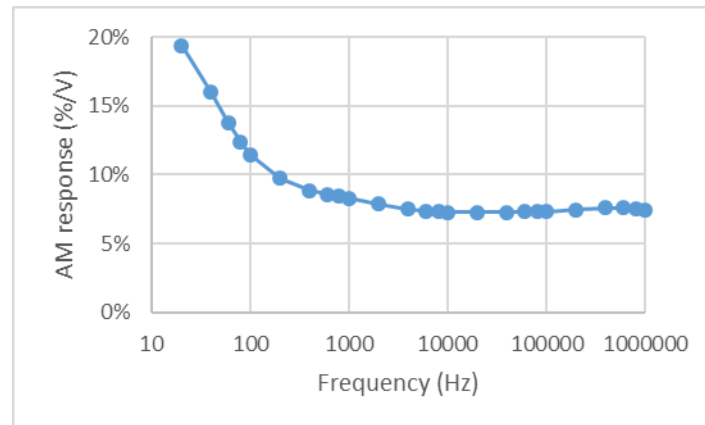
Provides access to the current-injection circuit for the gain chip to generate amplitude modulation. There is associated frequency modulation. This is a hardware modification.

Excessive high or low (negative) voltage values and frequencies close to 888Hz should be avoided while the laser is operating in standard (dither) mode.

The signal is DC coupled. Bandwidth is 1 MHz. Response depends on the operating power and varies from device to device. Below a typical response at 13.5dBm is provided (response is stronger at lower powers). Typical voltage range is 0-10V.

Note, AM should only be used in the whispermode.

Note, Amplitude Modulation can not be combined with low-RIN configuration



This configuration is not compatible with the low RIN option

GUI

Basic GUI (keyword: 'basic')

CLI Commands

Not applicable

RS-232 Commands

Not applicable

15. Clean Measurement (CH1 and CH2)

Description

The Clean Measurement input (2 channels possible) feeds into a 16-bit ADC. It can be used to feed information to the laser through an analog channel. The usage of that information is defined in the firmware.

Input voltage should be in the range 0 – 2.5V

For example, one implementation is to map the measured voltage to a voltage offset ('analog FTF'). In this way a feedback loop for frequency stabilization can be created. Other usage might be to detect the signal of a photo-diode while the laser is scanning. This allows integration of laser control and PD read-out and should provide better accuracy.

GUI

Basic GUI (keyword: 'basic'), for implementation of the analog FTF

CLI Commands

None

RS-232 Commands

Register 0x93 is used to read the value on the input (value 0-65535), with 65535 corresponding to 2.5V and 0 to 0V. If the data-field to register 0x93 is 0 CM1 is read out. If the data-field is 1, CM2 is read out.

For the analog FTF implementation: Register **0xf8**: set range associated with analog FTF in units of 10MHz (e.g. a value of 1000, means that 0V input is -10GHz and 10V is +10GHz)

16. Analog Output

Description

The analog output give access to an internal 16-bit DAC to convert a digital signal into an analog output voltage on the pin 17.

Output voltage is in the range 0 – 2.5V

The user can use this feature to output an internal characteristic of the laser to his own system in a convenient analog format (requires special firmware configuration) or just as an additional ADC in his system.

GUI

This is not implemented in the GUI

CLI Commands

None

RS-232 Commands

Register **0x94**: sets and reads the DAC value (0-65535).

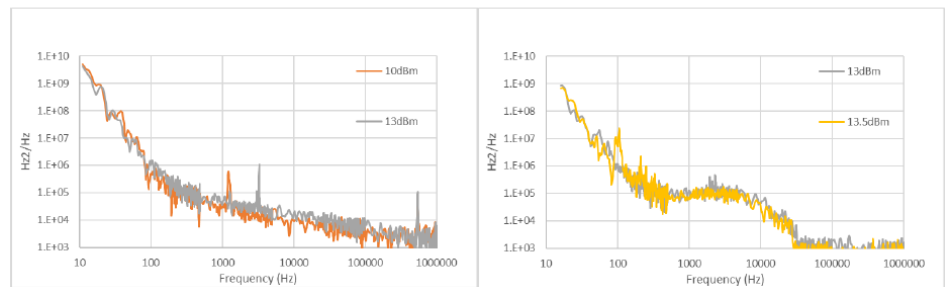
17. Low RIN Configuration

Description

This hardware modification adds additional filtering on the current supply, lowering the RIN significantly in the 50kHz – 10MHz range. In addition, the FM noise is lowered to the Lorentzian noise level in that frequency range.

This configuration is not compatible with AM modulation with 1MHz bandwidth. AM modulation with 50kHz bandwidth can be selected to have this feature included.

Phase Noise (before / after)



GUI Basic GUI (keyword: 'basic')

CLI Commands None

RS-232 Commands None

18. PPCL5x0 Enclosure

Description

The PPCL500 enclosure solution takes PPCL600, whereas the PPCL550 uses the PPCL700 and integrates it into an enclosure along with power supplies and a micro-USB interface.

The unit is delivered with wall-plug power supply (transformer) and micro-USB cable.

For units with analog inputs/outputs SMA connectors are used.

All features that are available on the laser are available within the enclosure solution.



GUI	All GUIs
CLI Commands	None
RS-232 Commands	None